

PRINT YOUR MAP

STEP-BY-STEP HELP

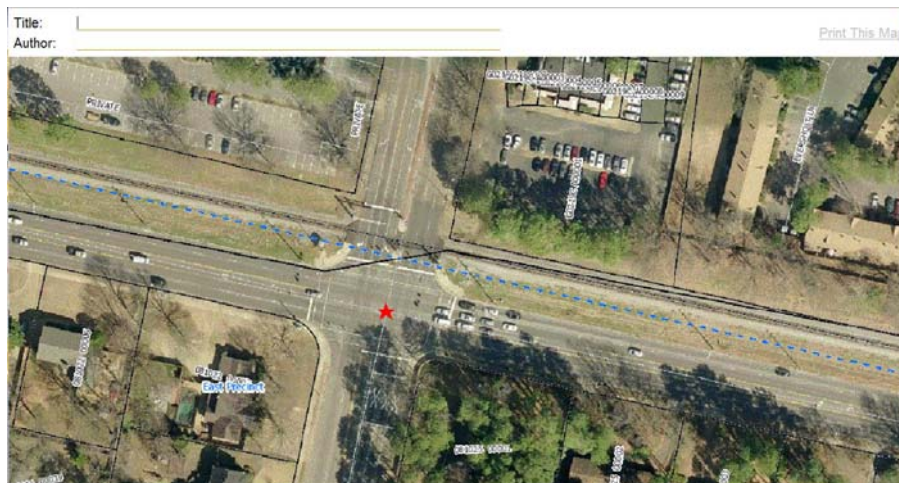


1. Access the map at <http://mapview.memphistn.gov>
2. **Print Your Map** - Once you have customized the look of your map you can print your current view.
 - a. On the Toolbar click the printer icon



[TIP – if your browser block pop-ups, you may have to hold SHIFT or CTRL while clicking print]

- b. A new window will appear with a printable view of your map.



- c. At the top of the new window you will have the opportunity to add a printed Title and Author by simply typing on those entry lines. When you are ready click the Print This Map link in the upper right corner, select your printer, and print.